



USB to Serial Cable

CN-104v2

Quick Start Guide

Introduction

This product converts an USB 1.1 interface to a serial interface. New PC's often don't have RS232 ports. The Universal Serial Bus (USB) is getting more and more popular and the traditional RS232 port is disappearing. This product provides the conversion between USB and RS232.

1. Features

- Supports RS232 serial interface
- Supports 500 kbps data transfer rate
- Plug & Play compatible
- Bus powered, no extra power adapter required

**Note: The USB to Serial adapter does not support interrupt transfer devices.
(for example: keyboard, mouse, joystick)**

2. System Requirements

- IBM Compatible PC
- Windows 98SE, ME, 2000 or XP
- Available USB port
- 64 MB RAM or above
- Pentium 233 MHz or higher

3. Installation Windows 98SE

- Plug the USB connector of the USB to Serial cable in a free USB port. Windows will detect new hardware. Click 'Next' to continue.



- Select 'Search for the best driver for your device. (Recommended).' and click 'Next'.



- Select 'Specify a location', fill in E:\drivers\win98SE (if E: is your CD-ROM) and click 'Next'. You can also use the 'Browse' button to select the proper location of the drivers.



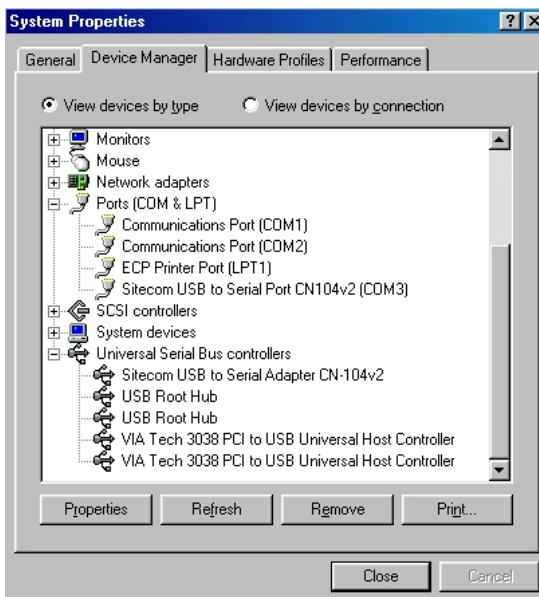
- Windows will detect the driver. Click 'Next'.



- Click 'Finish' to complete the installation of the USB to Serial cable.



- Check the device manager to see if the Sitecom USB to Serial cable is installed correctly. The cable is installed under 'Ports' and 'USB Controllers'.



4. *Installation Windows ME*

- Plug the USB connector of the USB to Serial cable in a free USB port. Windows will detect new hardware. Select 'Specify the location of the driver (Advanced)'. Click 'Next' to continue.



- Select 'Specify a location'. Fill in E:\drivers\winME (if E: is your CD-ROM) and click 'Next'. You can also use the 'Browse' button to select the proper location of the drivers.



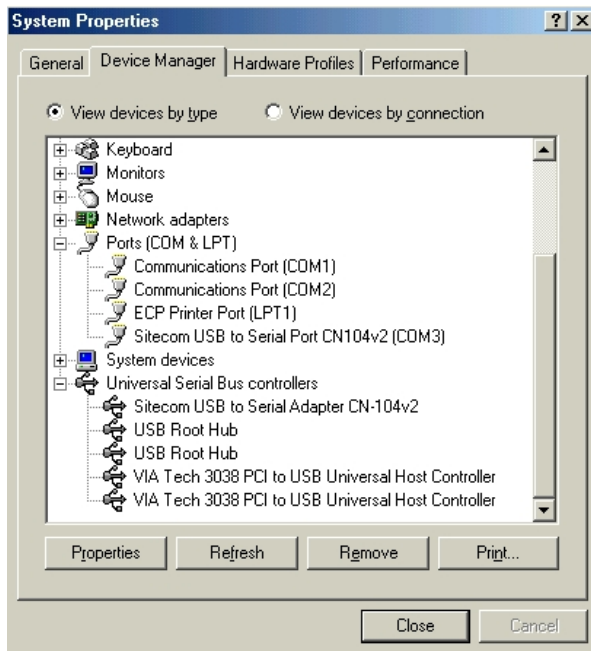
- Windows will detect the driver. Click 'Next'.



- Click 'Finish' to complete the installation of the USB to Serial cable.



- Check the device manager to see if the Sitecom USB to Serial cable is installed correctly. The cable is installed under 'Ports' and 'USB Controllers'.

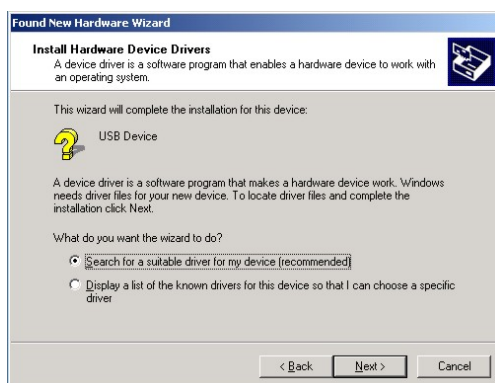


5. *Installation Windows 2000*

- Plug the USB connector of the USB to Serial cable in a free USB port. Windows will detect new hardware. Click 'Next' to continue.



- Select 'Search for a suitable driver for my device (recommended)' and click 'Next'.



- Select 'Specify a location' and click 'Next'.



- Fill in E:\drivers\win2000 (if E: is your CD-ROM) and click 'Next'. You can also use the 'Browse' button to select the proper location of the drivers.



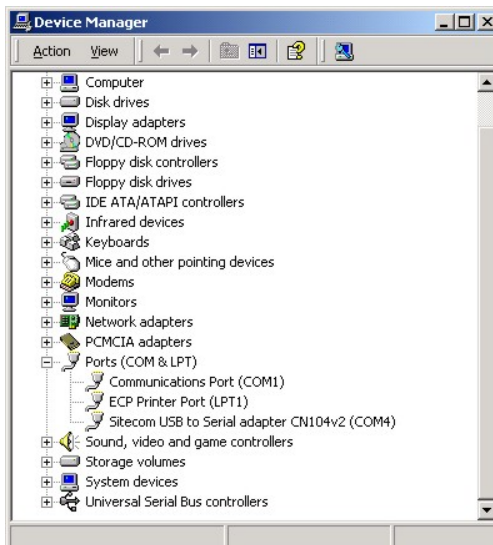
- Windows will detect the driver. Click 'Next'.



- Click 'Finish' to complete the installation of the USB to Serial cable.



- Check the device manager to see if the Sitecom USB to Serial cable is installed correctly. The cable is installed under 'Ports'.

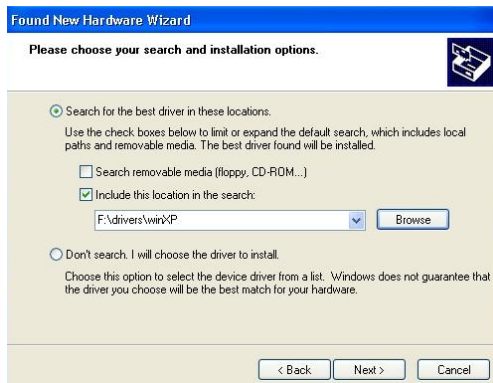


6. *Installation Windows XP*

- Plug the USB connector of the USB to Serial cable in a free USB port. Windows will detect new hardware. Select 'Install from a list or specific location (Advanced)'. Click 'Next' to continue.



- Select 'Include this location in the search'. Fill in F:\drivers\winXP (if F: is your CD-ROM) and click 'Next'. You can also use the 'Browse' button to select the proper location of the drivers.



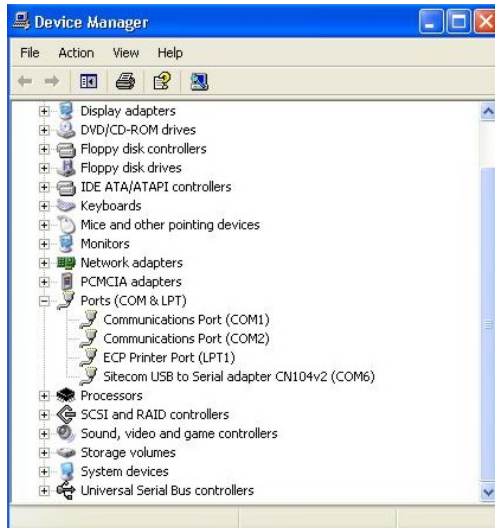
- Click 'Continue Anyway' to pass the Microsoft Logotest.



- Click 'Finish' to complete the installation of the USB to Serial cable.



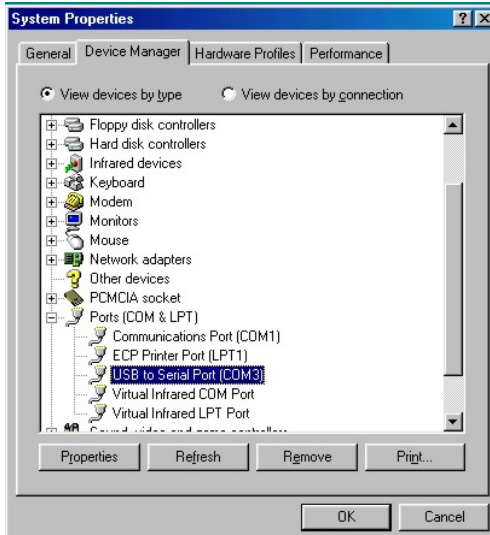
- Check the device manager to see if the Sitecom USB to Serial cable is installed correctly. The cable is installed under 'Ports'.



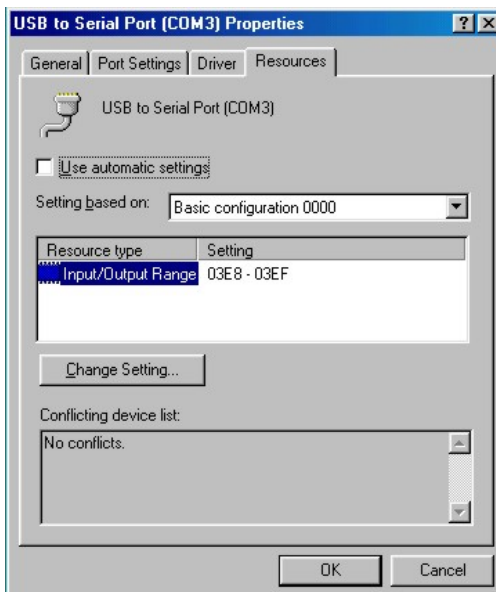
7. Changing the COM Port

- Windows 98SE/ME

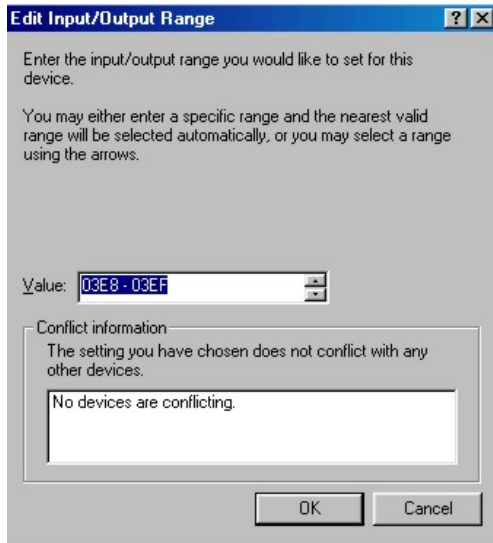
- Go to the device manager, open Ports and select the USB to Serial cable. Click 'Properties'.



- Go to the Resources tab, uncheck the 'Use automatic settings' checkbox and click 'Change Settings'.



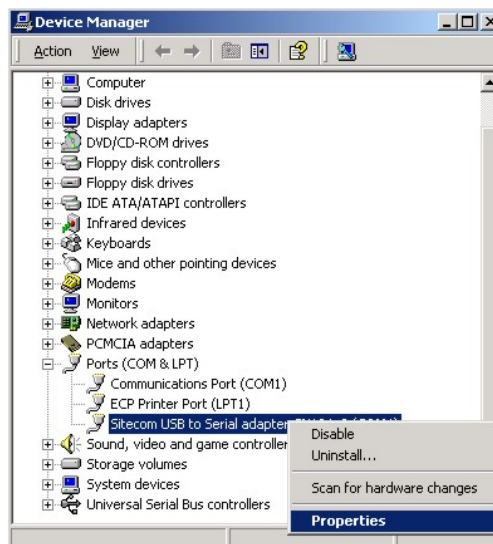
- The value, and therefore the COM port, can be changed. Click 'OK' to finish and reboot the pc.



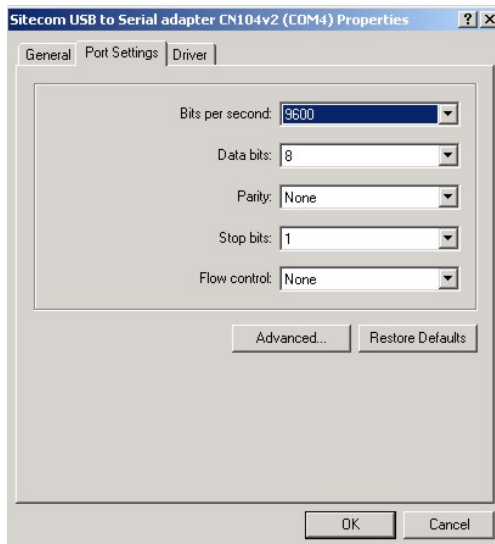
COM1 : 03F8-03FF
COM2 : 02F8-02FF
COM3 : 03E8-03EF
COM4 : 02E8-02EF
COM5 : 03D8-03DF
COM6 : 02D8-02DF

- Windows 2000/XP

- Go to the device manager, open Ports and select the USB to Serial cable. Right mouse click the Cable and choose 'Properties'.



- Go to the 'Port Settings' tab and select 'Advanced'.



- Change the COM port Number and click 'OK', reboot the pc to finish.

